



Parent Payments & Book List 2024

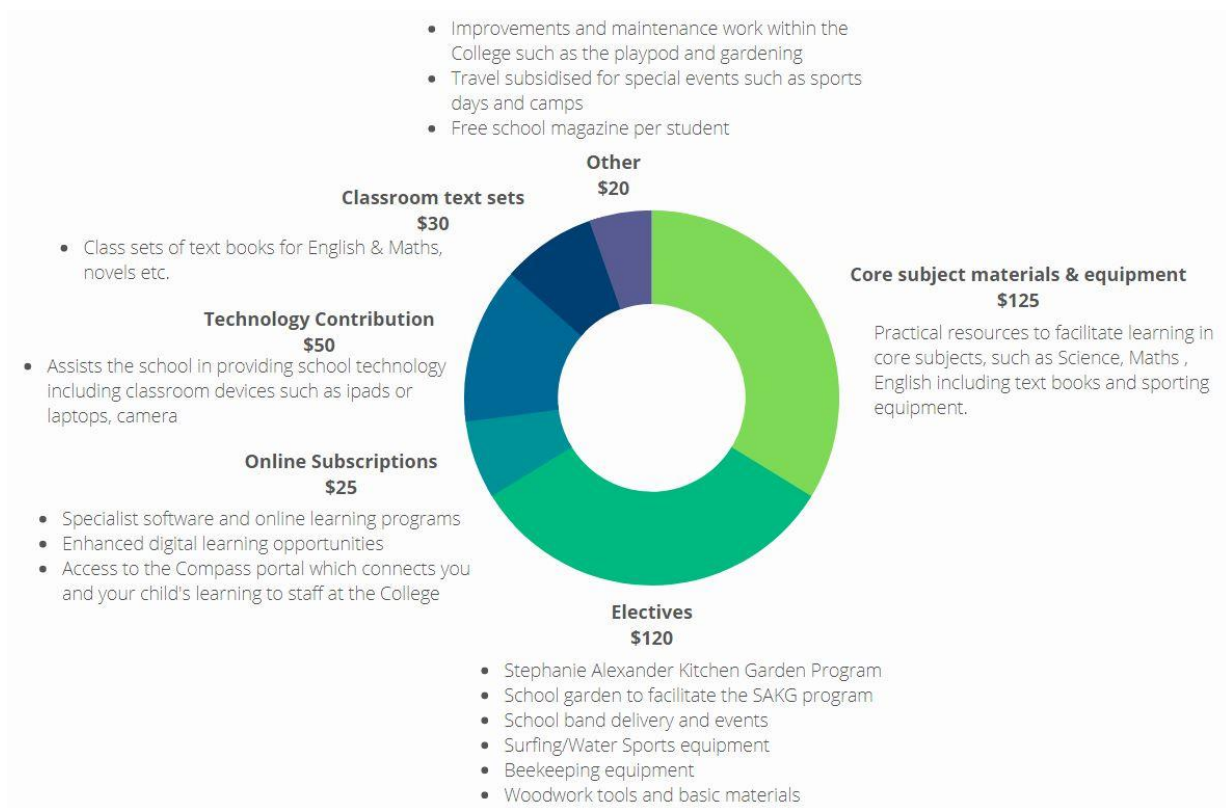
VCE – Year 11 & 12

Dear Parent/Guardian,

Apollo Bay P-12 College is looking forward to another great year of teaching and learning and would like to advise you of our College's voluntary financial contributions for 2024.

Schools provide students with free instruction to fulfil the standard curriculum requirements and we want to assure you that all contributions are voluntary. **Nevertheless, the ongoing support of our families ensures that our school can offer the best possible education and support for our students.** We want to thank you for all your support, whether it is through financial contributions, fundraising, or volunteering your time at school. This makes a huge difference to our school and the programs we can offer.

Within our school, financial contributions allow us to provide the following:



Support from parents connected with the College continues to enable us to provide an outstanding P-12 curriculum program for our students from Year Prep to 12 and ultimately, continue to foster positive outcomes for our students.

For further information on the Department's Parent Payments Policy please see overview attached at the end of this document.

Yours sincerely,

Brian Humphries
Principal

Dan Holthouse
College Council President

Booklist & Online Resources – VCE Year 11 & 12

Some VCE subjects will use the online resource package provided by Edrolo to deliver courses. Other subjects require textbooks through the Champion booklist. Some textbooks are not available second hand as there are new study designs in those subjects. A detailed list is at the bottom of this letter. These resources are both ordered online and payment is made directly to Edrolo and Champion. **It is important that students discuss these requirements with their teachers as several subjects will have textbooks available to be purchased second hand.**

Edrolo is offering a digital library subscription for \$50 per subject, with a maximum of \$150 to be charged for students in 3 or more Edrolo subjects.

Due to the varying subjects students undertake in VCE the College does not complete a stationery order for students as they do for students in years 7 to 10. Please note the items below that students should independently source for their studies in 2024.

- A4 lined binder books for each subject.
- Stationery – pens, pencils, highlighters, pencil case.
- Folder with lined looseleaf paper and plastic pockets.

Math students are required to purchase a CAS calculator – please see letter with offer to purchase.

Students studying Art, Vis Comm, Media or Product Design may wish to discuss their options for preferred folio presentation with their teachers.

2024 Subjects		
Units 1&2 and 3&4 Biology	Edrolo	Textbooks available second hand
Units 1&2 and 3&4 Chemistry	Edrolo	Only Unit 1/2 textbook available second hand
Units 1&2 Psychology	Edrolo	Textbooks available second hand
Units 1&2 and 3&4 Physical Education	Edrolo + Champion	Textbooks available second hand
Units 1&2 and 3&4 English	Champion	Some texts available second hand
Units 1&2 and 3&4 Math Methods and General Math	Champion	Textbooks available second hand
Units 1&2 Health and Human development	Edrolo	No textbook required
Units 3&4 Health and Human development	Champion	Textbooks available second hand
Units 1&2 and 3&4 Outdoor Education	Champion	NOT available second hand
Units 3&4 History	Edrolo	No textbook required
Units 1&2 and 3&4 Product Design	Champion	NOT available second hand
Units 3&4 Visual Communications	Edrolo	No textbook required
Units 3&4 Art	Edrolo	No textbook required
Units 3&4 Media	Edrolo	No textbook required

Parent Payments – VCE Year 11 & 12

There are 2 columns listed below:

Recommended amount – An indicative amount of what we spend per student to provide this resource or subject

Contribution amount – The amount you are willing to contribute towards this resource or subject

Student Name: _____

2024 Year Level: _____

Curriculum Contributions - items and activities that students use, or participate in, to access the Curriculum	Recommended Amount	Contribution Amount
General Classroom Consumables, Materials & Equipment <ul style="list-style-type: none"> Exercise books, school diary, pencils, ruler, glue, paper and poster paper English – book boxes, classroom texts, novels Sports – equipment for play during breaks 	\$30	
Subject Specific Materials & Equipment <ul style="list-style-type: none"> Year 11 VCE Units 1+2 Combinations @ \$40 x 6 (\$240) or Year 12 VCE Unit 3+4 Combinations @ \$40 x 5 (\$200) 	\$240 or \$200	
TOTAL – CURRICULUM CONTRIBUTIONS (as per selected)	\$230 - \$270	
Other Contributions Total - for non/extra-curriculum items and activities	\$20	
Facilities Contribution - School grounds maintenance and improvements	\$ 20	
TOTAL – including ‘Other Contributions’	\$250 - \$290	
<i>If paying in person at the General Office, please bring this sheet with you.</i>		

Online Subscriptions

Edrolo is \$50 per subject, with a maximum of \$150 to be charged for students in 3 or more Edrolo subjects (for more information see *Edrolo Payment Portal Parent Letter*).

Events – Camps & Excursions

We have listed the major camps offered in Year 7 to 10 to help you plan ahead. Please note that smaller camps/excursions may be held throughout the year with smaller associated costs. All camps are extra-curricular activities which we encourage your child to attend.

Camps and excursions are provided in addition to the standard curriculum program on a user-pays basis. If parents/guardians choose to access these activities for students, they will be required to pay the requested amount.

All information about events is communicated via the Compass portal. Consent forms and payments are also managed through Compass. Any events requiring action will be visible when you are logged in to Compass and you will also be notified via email when consent and/or payment is due. *Note - camps and prices listed below are subject to change.*

Year Level	Location	Approximate dates	Approximate cost
Year 11	Cradle Mountain Camp (with Year 10 – Outdoor Ed students only)	Term 1	\$800
	OED Rubicon Camp (Outdoor Education students only)	Term 4	\$250

Support for Families

Apollo Bay P-12 College understands that some families may experience financial difficulty and offers a range of support options, including:

- **Camps, Sports and Excursions Fund (CSEF)** – please note there is a maximum of \$125 applicable for primary students and \$225 for secondary students per year
- **Centrelink** – payments on a fortnightly basis
- **State Schools Relief (SSR)** for uniform and other items
- **Payment plans** for extra-curricular items and activities

For a confidential discussion about accessing these services, or if you would like to discuss alternative payment arrangements, contact our Business Manager Lauren Nicholls on 5237 6483 or Lauren.Nicholls3@education.vic.gov.au .

Payment Methods

- **Pay directly at the office** in cash or Visa/Mastercard/EFTPOS
- **Direct Deposit** into the school bank account:
 - **BSB:** 063 629
 - **Account Name:** Apollo Bay P-12 College Council
 - **Account Number:** 1001 0660
(please use your 'Surname' and details such as 'Parent Payment', 'Booklist' etc in the reference)
- **Compass** – flexible payment options are available for Parent Payments including instalments & customisable charges.
- **Centrepay** – only available to holders of Centrelink Benefit Cards, to be arranged by the card holder directly through Centrelink (CRN 555 056 147X)

Refunds

Parent/Guardian requests for refunds are subject to the discretion of the school and are made on a case-by-case basis. Refunds will be provided where the school deems it reasonable and fair to do so, taking into consideration whether a cost has been incurred, the Department Parent Payment Policy and Guidance, and other relevant information.

Parent Payment Policy Overview



FREE INSTRUCTION

- Schools provide students with free instruction and ensure students have free access to all items, activities and services that are used by the school to fulfil the standard curriculum requirements in Victorian Curriculum F-10, VCE and VCAL.
- Schools may invite parents to make a financial contribution to support the school.



PARENT PAYMENT REQUESTS

Schools can request contributions from parents under three categories:

Curriculum Contributions

Voluntary financial contributions for curriculum items and activities which the school deems necessary for students to learn the Curriculum.

Other Contributions

Voluntary financial contributions for non-curriculum items and activities that relate to the school's functions and objectives.

Extra-Curricular Items and Activities

Items and activities that enhance or broaden the schooling experience of students and are above and beyond what the school provides for free to deliver the Curriculum. These are provided on a user-pays basis.

- Schools may also invite parents to supply or purchase educational items to use and own (e.g. textbooks, stationery, digital devices).



FINANCIAL HELP FOR FAMILIES

- Schools put in place financial hardship arrangements to support families who cannot pay for items or activities so that their child doesn't miss out.
- Schools have a nominated parent payment contact person(s) that parents can have a confidential discussion with regarding financial hardship arrangements.



SCHOOL PROCESSES

- Schools must obtain school council approval for their parent payment arrangements and publish all requests and communications for each year level on their school website for transparency.